

Fig. 1. CT scan of the head

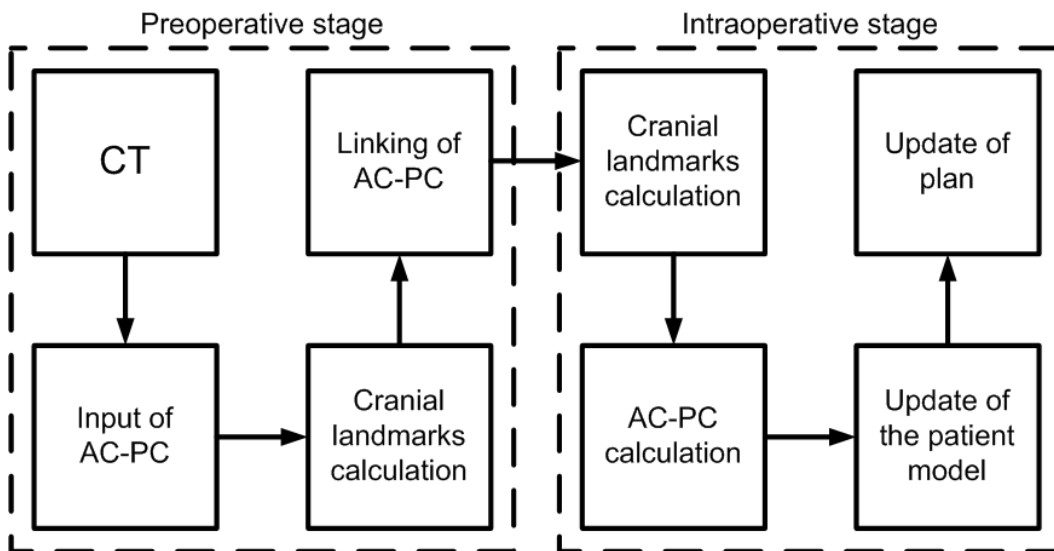


Fig. 2. Information flows in the calculation of intracerebral structures relative to the cranial landmarks

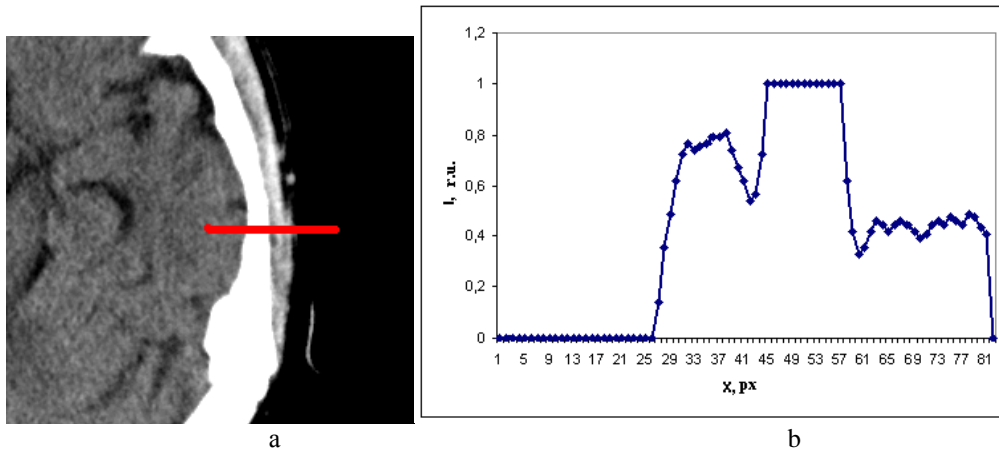


Fig. 3. The results of the densitometric analysis: a – area of tomographic image; b – profile of brightness (I) along the line (X)

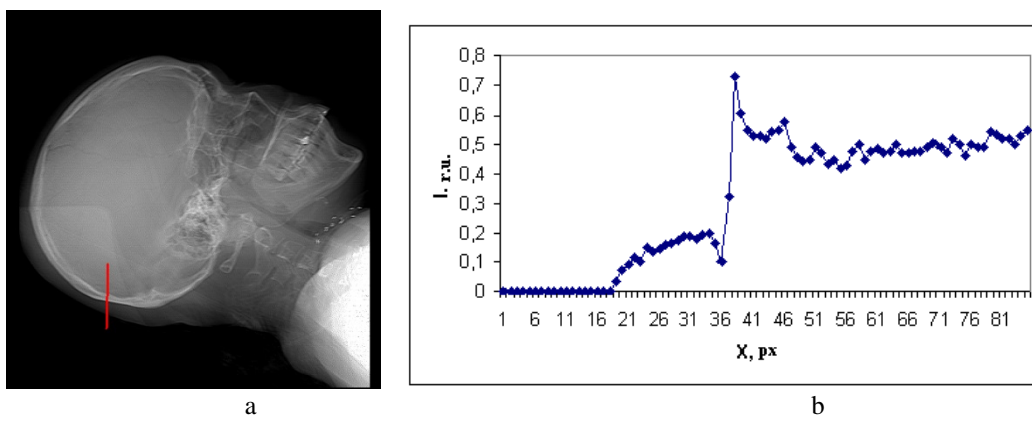


Fig. 4. The results of the densitometric analysis: a – area of topographic image; b – profile of brightness (I) along the line (X)

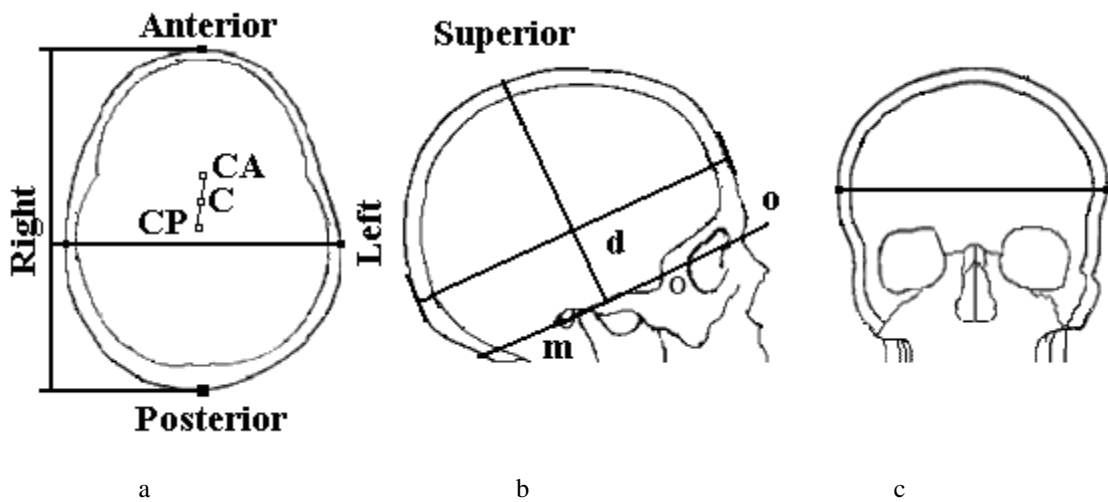


Fig. 5. Schematic representation of the landmarks: a – axial slice; b – sagittal topogram; c – frontal topogram

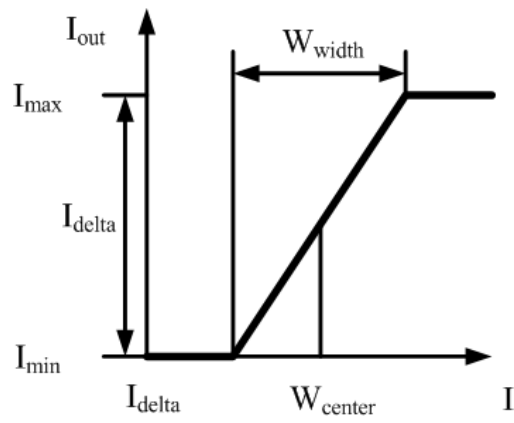


Fig. 6. The transformation function

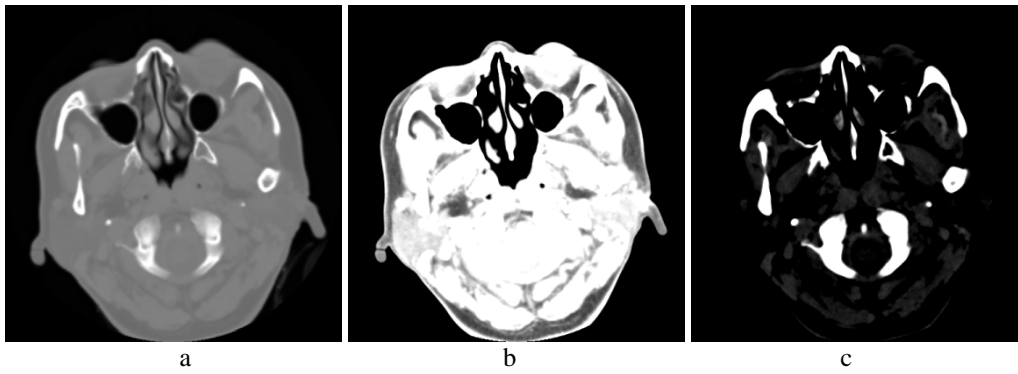


Fig. 7. The CT scan of the head: a – uniform visualization; b – visualization of the nasal passage and sinuses; c – visualization of bony structures

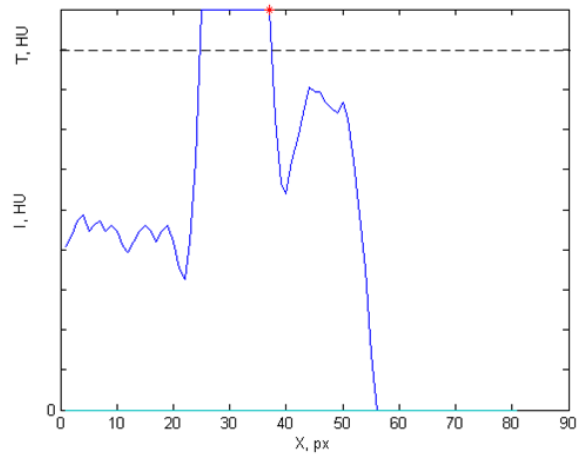


Fig. 8. Detection of border of the skull on the profile of brightness

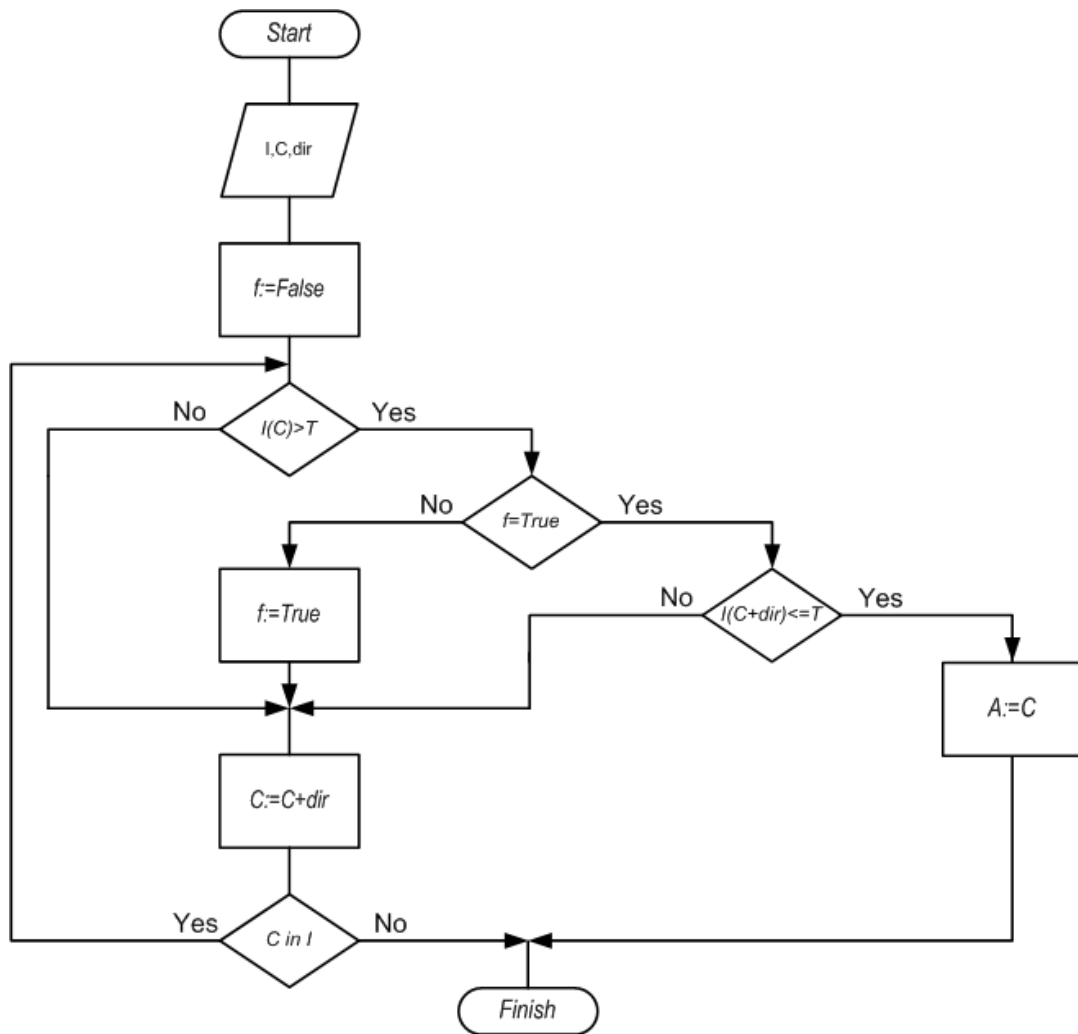


Fig. 9. Scheme of program for determination of cranial landmark