

Fig. 1. Generalized structure of knowledge management base

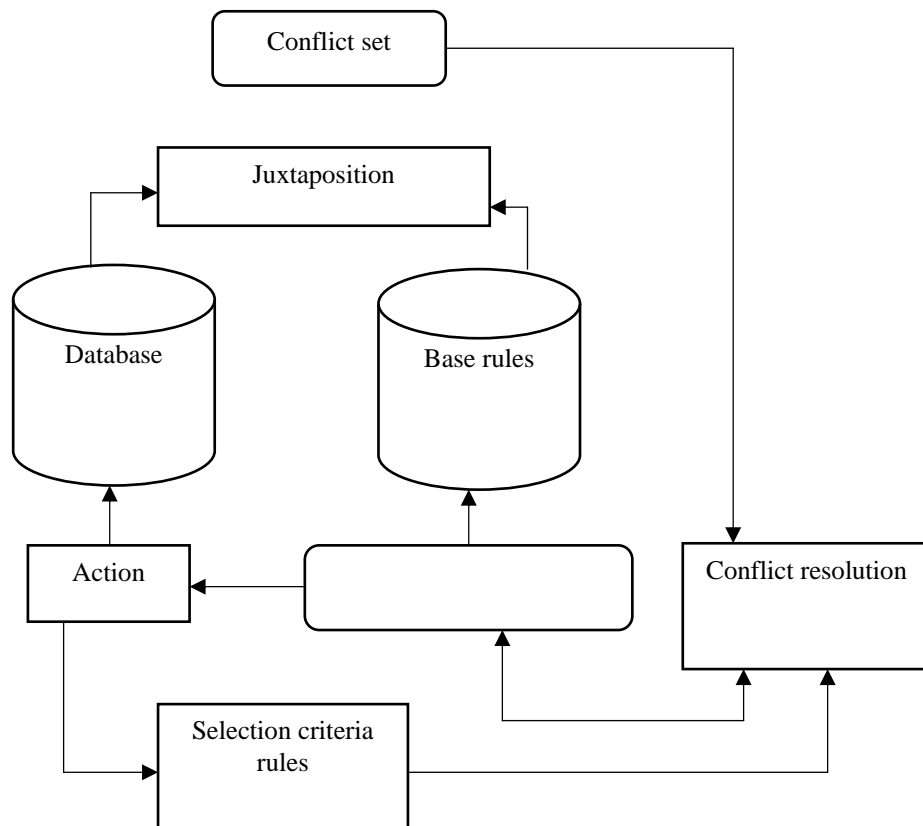


Fig. 2. The implementation of the subsystem to assess the organization finishing works under the supervision of a representative of the developer

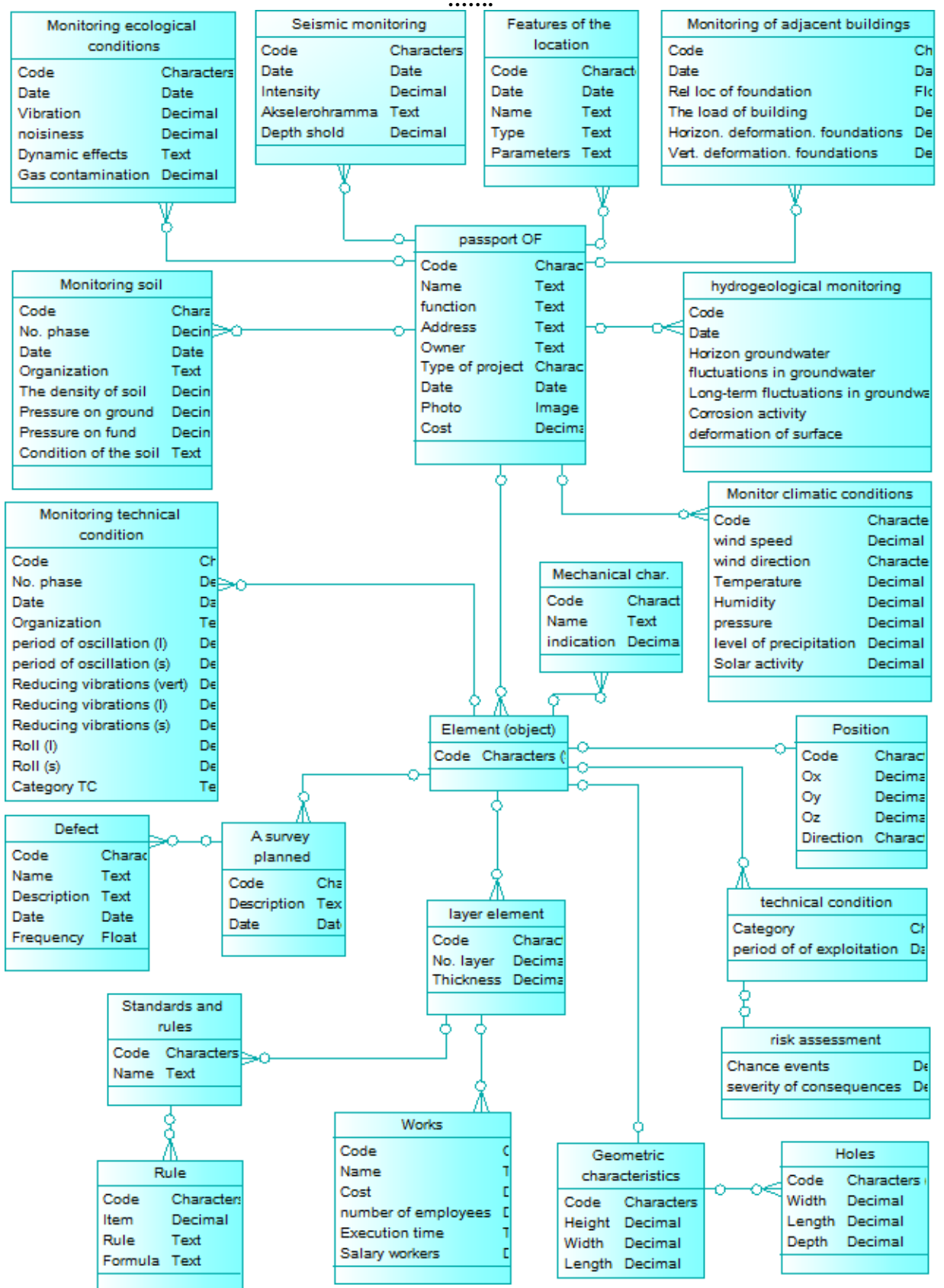


Fig. 3. A conceptual model of a database for the implementation of the established model of organization processes of arrangement interior

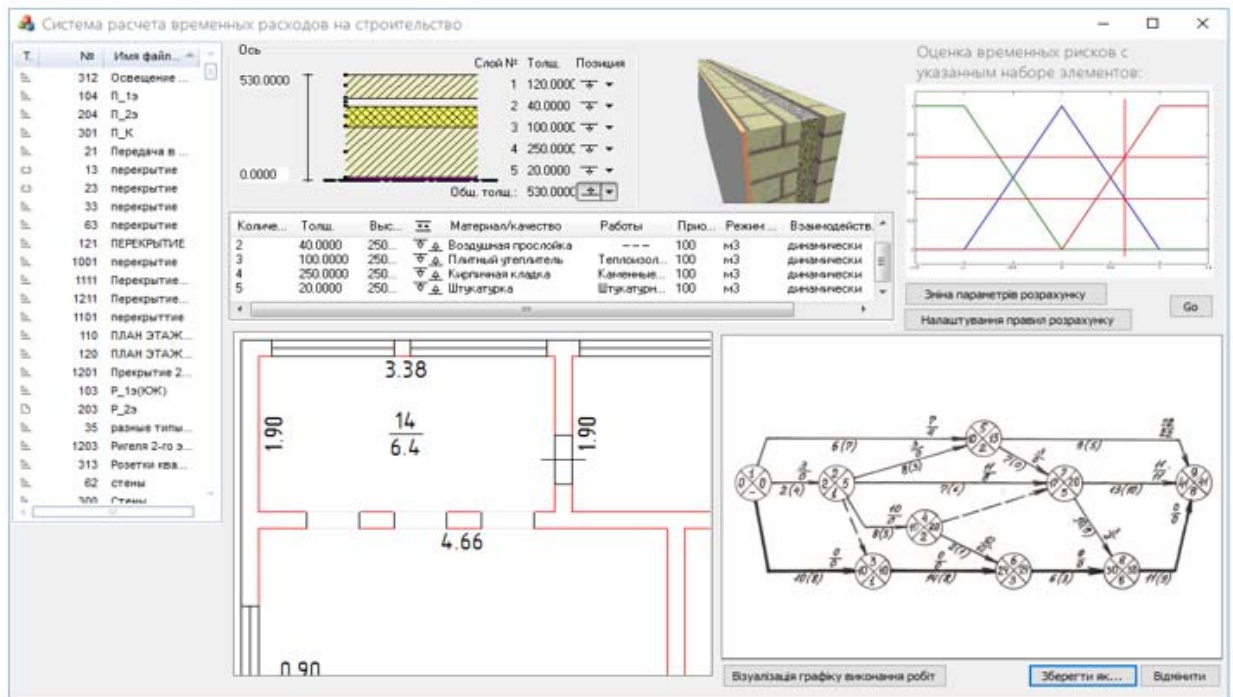


Fig. 4. Window work program to support the decision-making processes in the organization of the interior arrangement